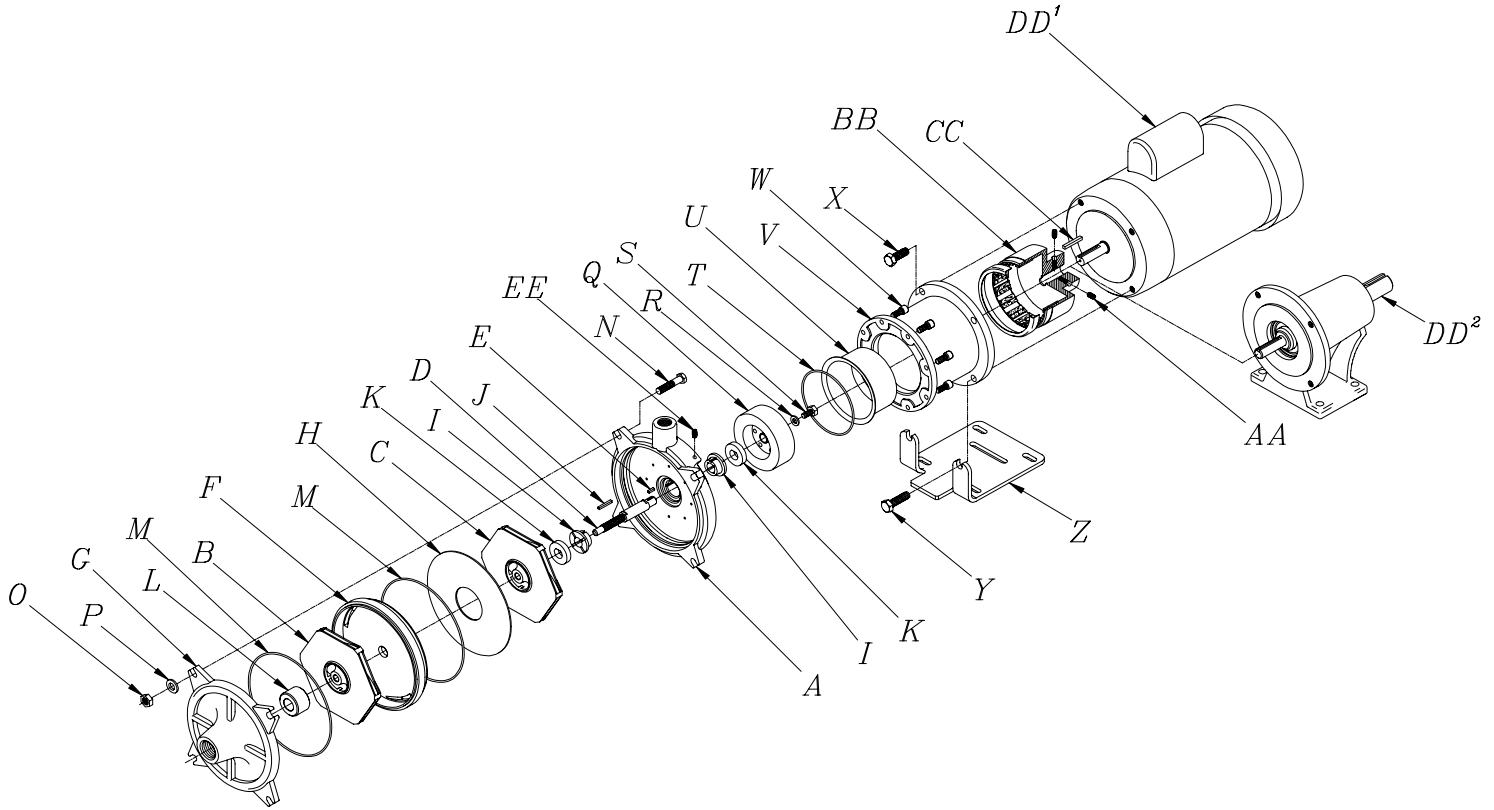




PRICE PUMP CO.

2MS75 Mag Drive Parts List

Effective: January 29, 2007



<u>Description:</u>	<u>P/N:</u>	<u>Description:</u>	<u>P/N:</u>
A. Volute	3619	N. Volute Bolt (4 ea.)	60-031-00
B. Impeller, Front	3624-dia	O. Nut (4 ea.)	3082
C. Impeller, Rear	3625-dia	P. Washer (4 ea.)	3081
D. Shaft 316SS (std.)	3628	Q. Driven Magnet	3627
For carbon/ceramic bushings	3628	R. Lockdown Washer	2423
Shaft Tungsten Coated (opt.)	3628-30	S. Lockdown Bolt	0917
For silicon carbide bushings	3628-30	T. O-ring, Magnet Cup	2465
E. Shaft Key	2424	U. Magnet Cup	2454
F. Diffuser	3621	V. Drive Housing	3626
G. Suction Plate	3620	W. Housing Bolts (8 ea.)	2466
H. Separator Plate	3622	X. Top Motor Bolts (2 ea.)	0579
I. Thrust Bushing (2 ea.)	3699	Y. Bottom Motor Bolts (2ea.)	3083
Carbon (std.)	3699	Z. Base Plate	8017
Silicon Carbide (opt.)	3630	AA. Setscrew (2 ea.)	2452
J. Bushing Key	2467	BB. Drive Magnet	
K. Thrust Washer (2 ea.)	3700	5/8" Shaft Bore	2471
Ceramic (std.)	3700	7/8" Shaft Bore	2471-1
Silicon Carbide (opt.)	3629	CC. Motor Shaft Key	2472
L. Hub Bushing	3705	DD ¹ . Electric Motor	Specify P/N
Carbon (std.)	3705	DD ² . Power Frame	5478
Silicon Carbide (opt.)	3631	EE. Setscrew	0598
M. Viton O-ring (2 ea.)	3659		