

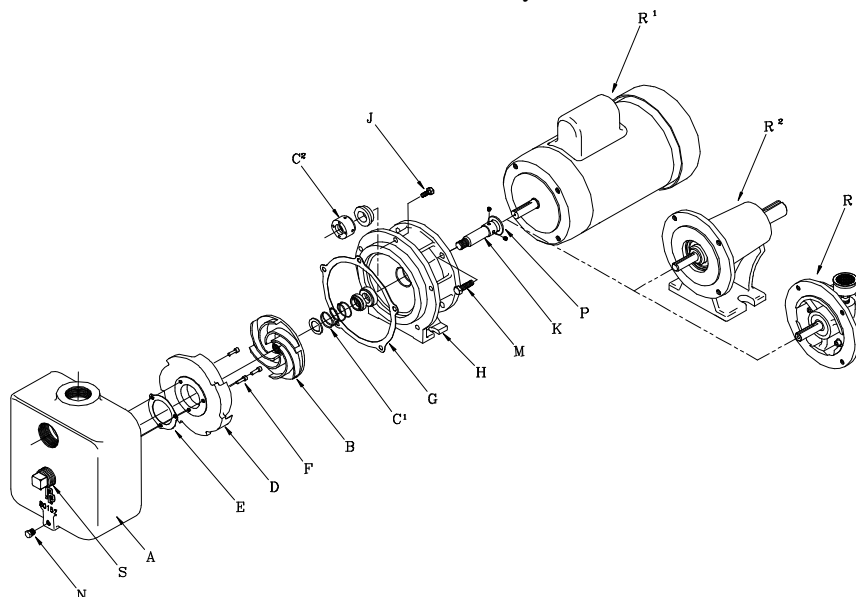


PRICE PUMP CO.



SP150 PARTS LIST

Effective: February 11, 1998



		<u>SP150AI & SP150SS</u>	<u>SP150SS</u>
A.	Volute	0962	
B.	Impeller:		0967
	4.75 - .50 Vn Ht	3264-475A	3272-475A
	4.75 - .44 Vn Ht	3264-475B	3272-475B
	4.75 - .31 Vn Ht	3264-475C	3272-475C
	4.75 - .25 Vn Ht	3264-475D	3272-475D
	4.75 - .12 Vn Ht	3264-475E	3272-475E
	4.625 - .12 Vn Ht	3264-463E	3272-463E
	4.25 - .12 Vn Ht	3264-425E	3272-425E
	4.25 - .07 Vn Ht	3264-425F	3272-425F
	Seal with Seat:		
C ¹ .	T.21 Buna on Cast Iron pump	1112	
	T.21 Fluorocarbon on SS pump	0549	
C ² .	T.9 PTFE (opt)	0551	
	Seat pin for T.9 (not shown)	0890	
D.	Diffuser	0963	0968
E.	Diffuser Gasket	0966 (Syn Fiber)	0971 (PTFE)
F.	Diffuser Bolts (3 rqd)		0977
G.	Volute Gasket	0965 (Syn Fiber)	0970 (PTFE)
H.	Bracket	0964	0969
J.	Volute Bolts (5 rqd)	0911	0976
K.	Shaft w/Setscrews	0270-1	
M.	Motor Bolts (4 rqd)	0588	
N.	1/8" Pipe Plug	0557	0559
S.	1" Pipe Plug (CI only)	0562	N/A
P.	Slinger, 7/8"	0522	
R ¹ .	Motor - Specify P/N		
R ² .	Power Frame	5478	
R ³ .	Air Motor - Specify P/N		

SP150 Repair Parts Kit

Repair Kits includes: Gasket, Shaft w/SS, and Slinger

All Iron - P/N 0987

Stainless Steel - P/N 0989

Note: Seal/seat must be ordered in addition to repair kit.

3/4" T.21 Buna for Cast Iron (std), T.21 Fluorocarbon for SS (std)

AI = All Iron
 AB = All Bronze
 BF = Bronze Fitted
 SS = Stainless Steel
 Vn Ht = Vane Height